

the light lab

Glowrail

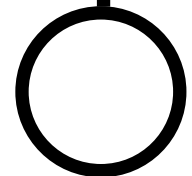
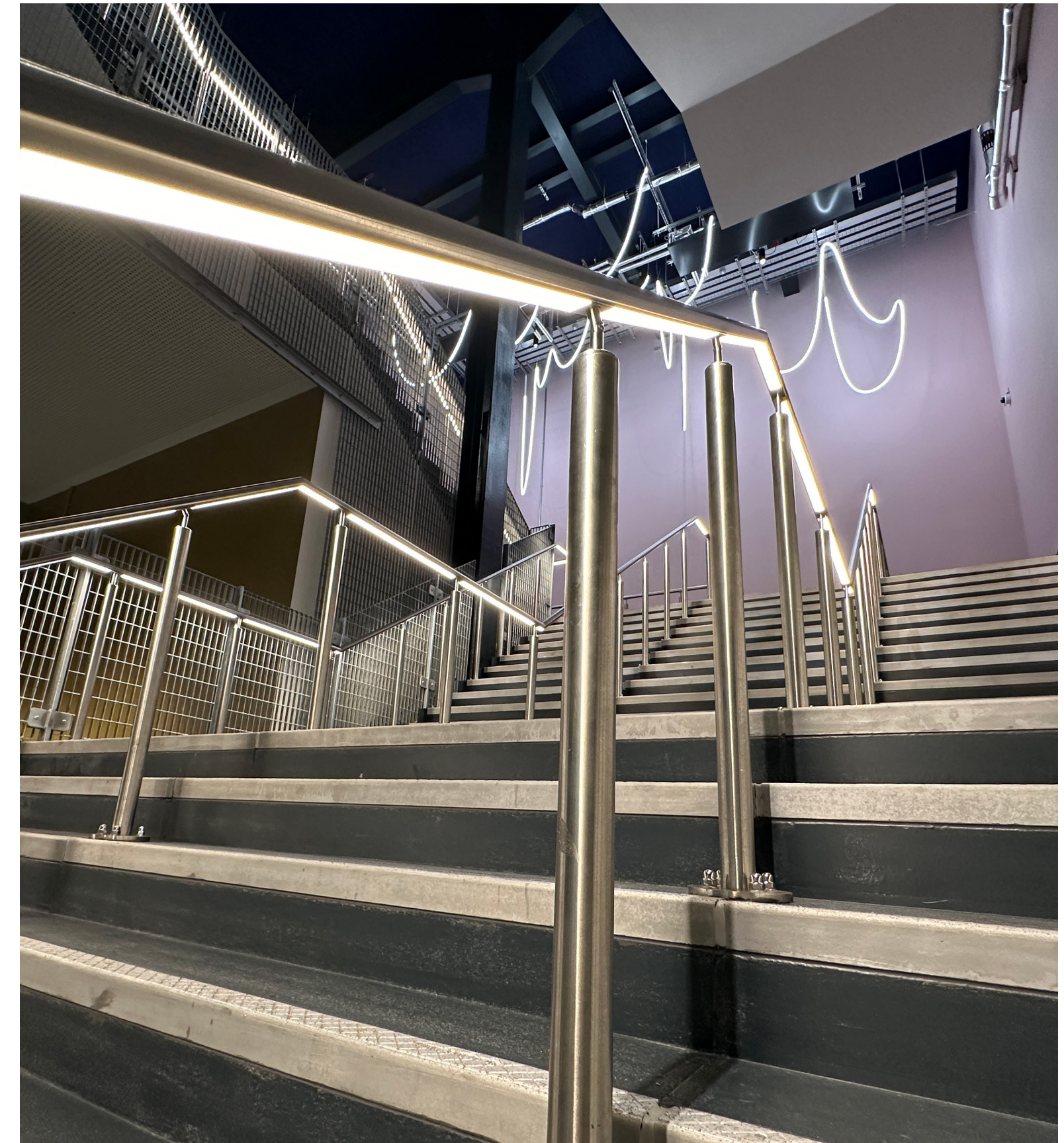
the light lab
bright ideas

Credentials



Company Approach

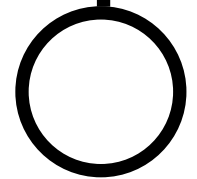
- Established in 2002, The Light Lab has spent the past two decades bringing together combined experience in lighting integration, new lighting technology and project management to deliver high-end architectural lighting installations.
- Based in London, The Light Lab has worked on many of the capital's landmark buildings, and has a strong national and increasingly international presence.
- The Light Lab are specialists in custom architectural lighting solutions. With extensive expertise in lighting integration, emerging technologies and project management, we deliver premium lighting installations worldwide.
- From initial collaborative design and drawings, mock-ups in our central London workshop, to manufacture/supply of all metalwork, glass, LEDs and controllers – we take full responsibility for all elements and final installation and finishing.

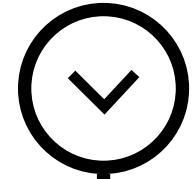




Our Approach

- We believe that lighting should be an integral part of the building design and we therefore encourage creating bespoke project-specific solutions rather than compromising around existing lighting products.
- This allows lighting elements to be as discrete as possible whilst maximizing their visual impact and achieving designers' ambitions for the space and environment.
- We focus our efforts on providing bespoke lighting solutions and installation. Alongside this we offer a range of specialist lighting products, offering them in tailored sizes to suit the needs of each project.
- All designed and manufactured to the highest standards, in the UK.





Project Process

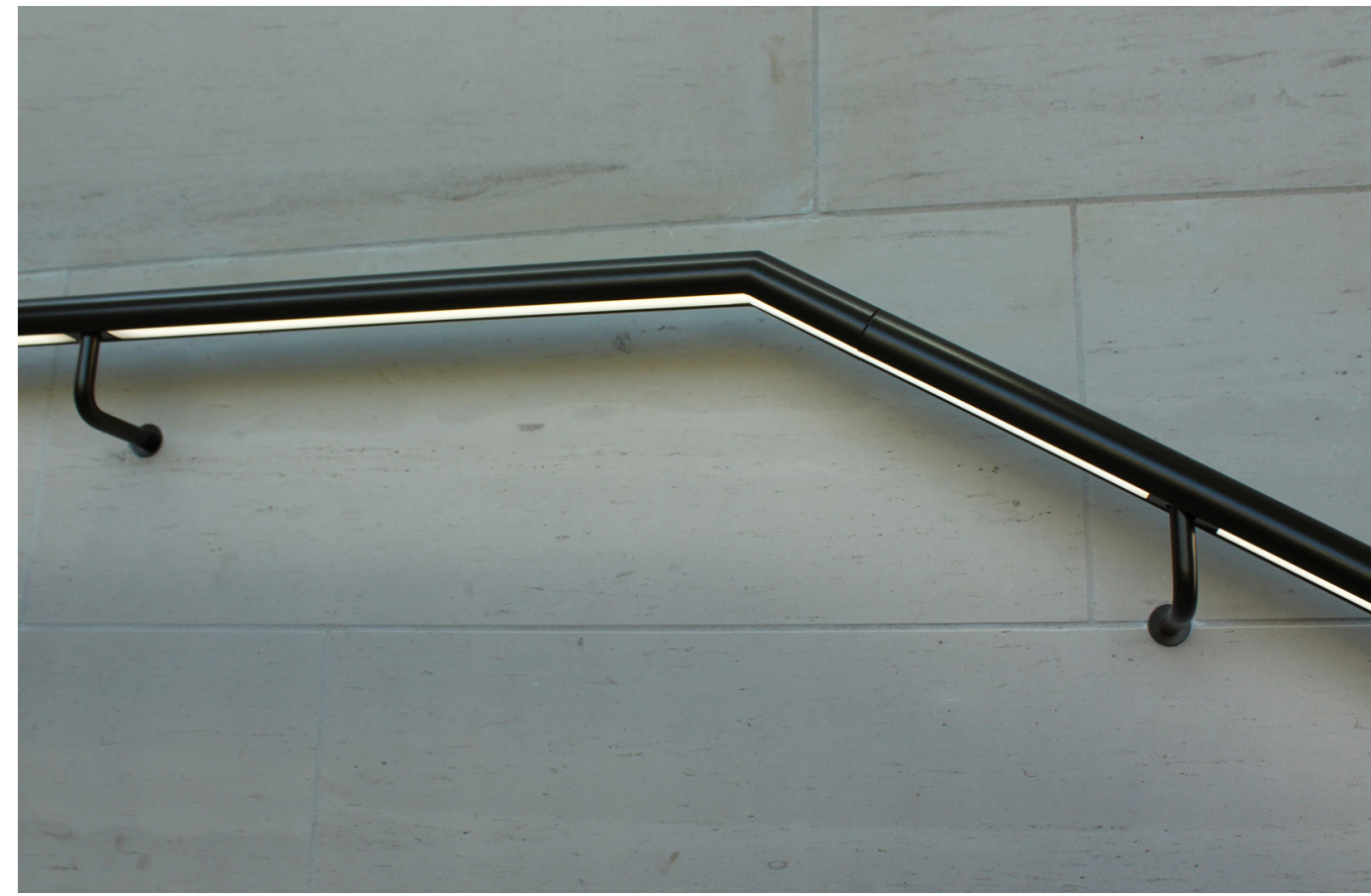
Design Integration

- We provide innovative solutions to realise the design concept. We operate across all sectors involving architectural lighting, producing CAD design and schematics, whilst managing supply of products to ensure design integrity is met.



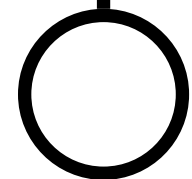
Manufacture

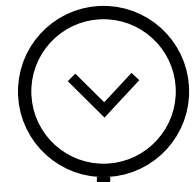
- The Light Lab have expertise in all areas of lighting manufacturing and fabrication, producing all finished products in the UK from high quality materials and components.



Installation

- We provide a skilled team of trained engineers for glass, metal and electrical elements, offering project management support throughout the whole process.





Glowrail

Glowrail is an innovative LED handrail system, designed to provide discreet, seamless, functional lighting for a wide range of architectural handrail applications. Fully tailorable in curved, straight, angular and helical sections, with even light diffusion throughout and is available in a variety of bespoke finishes including stainless steel, leather clad, timber, mirror polished and anodised.

Tailored: Fully tailorable in curved/straight/angular and helical sections with even light diffusion throughout.

LED: Wide range of light outputs, colour temperatures and colours.

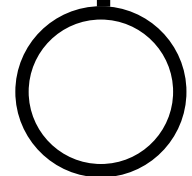
Control: Switched, 0-10/1-10v, DALI, DMX and SPI dimming protocols.

Material: Available in a range of bespoke finishes: stainless steel, timber, leather, brass, powdercoat, PVD, and soft-touch matte.

Aesthetic: Harmonised joins & mechanical fixing for discreet architectural integration.

Longevity: 50,000+ LED lifetime expectancy.

Sustainability: Maintainable LED modules.





Case Studies



London College of Fashion

Glowrail - Timber Finish



Architect	Allies & Morrison
Lightng Design	Buro Happold
Products	Glowrail - Timber Finish
Services	Specialist lighting manufacture & installation
Industry	Education

The Light Lab contributed bespoke lighting to the relocation of London College of Fashion, University of the Arts London, to its state-of-the-art, purpose built site at Queen Elizabeth Olympic Park on the Stratford Waterfront. Allies and Morrison & Buro Happold specified our expertise to fabricate our bespoke LED handrail fitting ‘Glowrail’ in a custom timber finish, spanning 15 stories throughout the new building.

[View here.](#)

One such solution was the ‘Heart Wall,’ a concrete frame comprising columns and beams that establishes a boundary between the central core and surrounding workshop spaces.

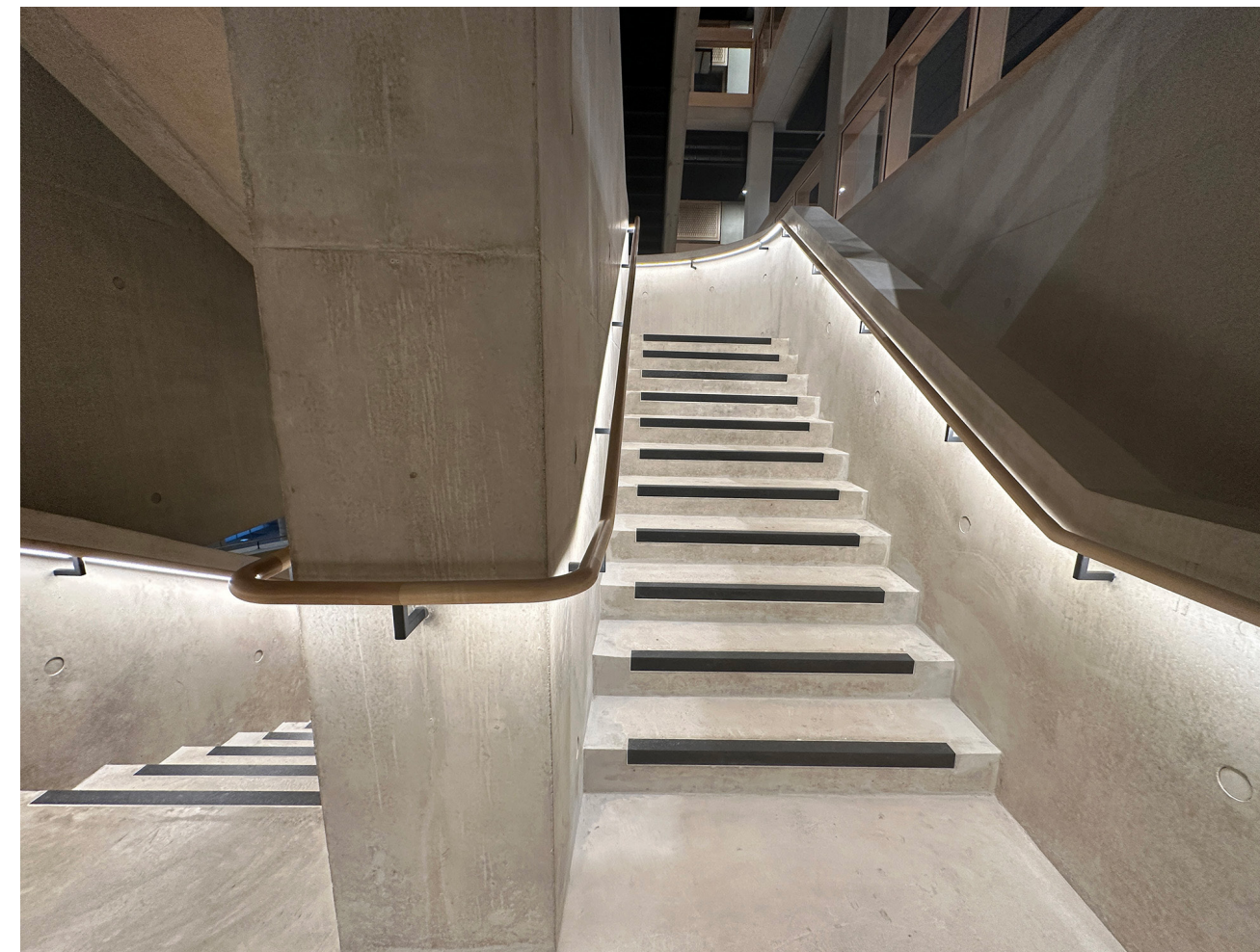
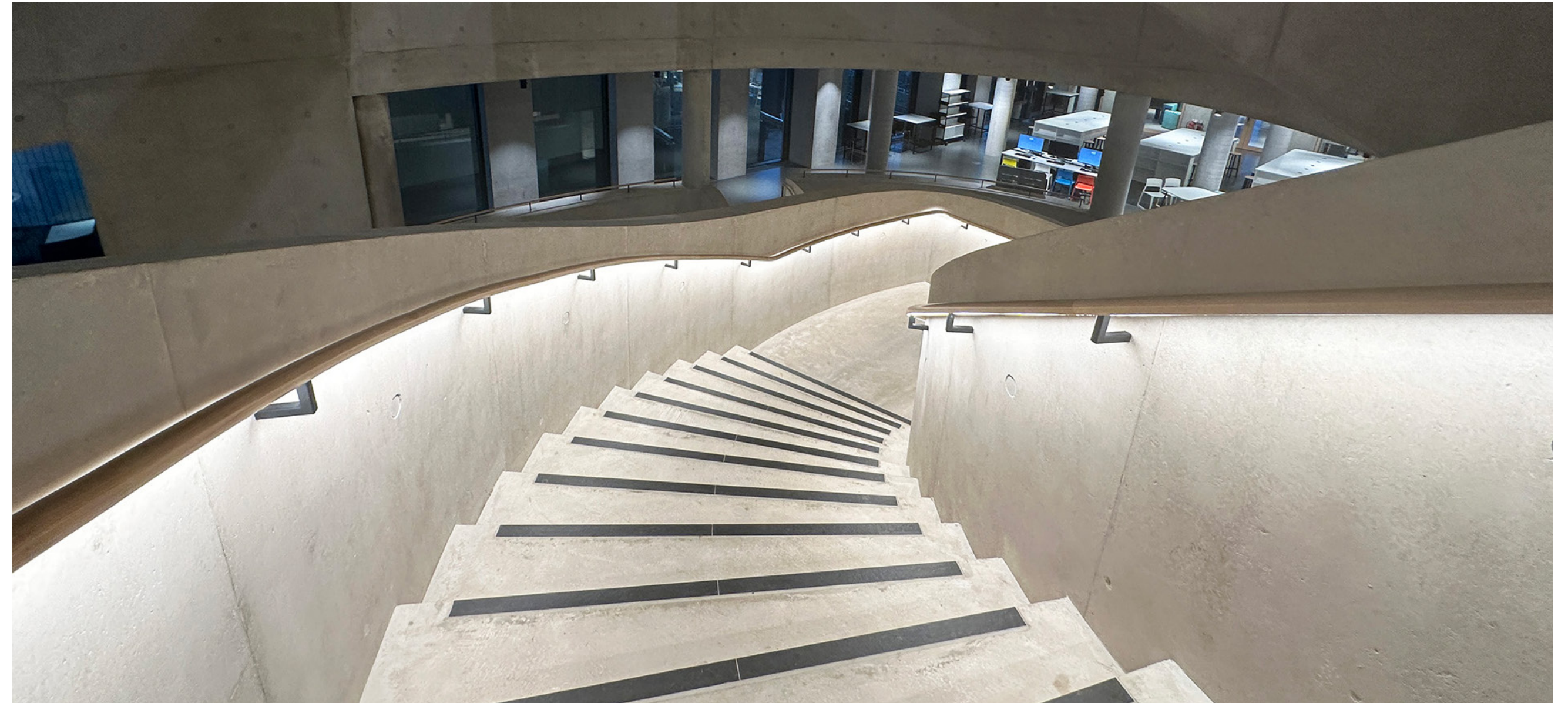
This structure provides primary stability while retaining flexibility in space utilization and service provision.

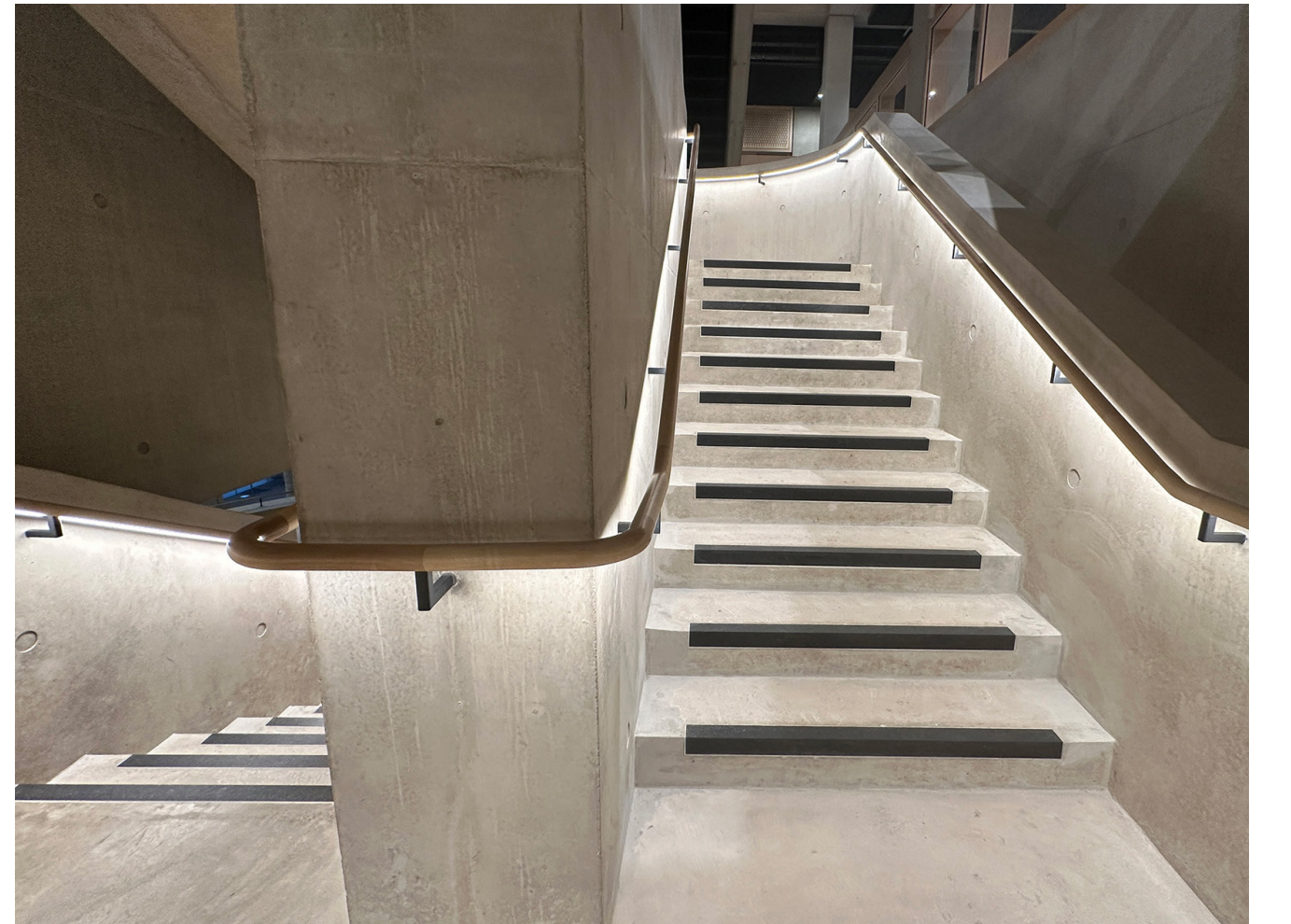
Internally, Buro Happold’s structural team devised innovative solutions for the complex spaces radiating from the central atrium and circulation space, known as the ‘Heart’. One such solution was the ‘Heart Wall,’ a concrete frame comprising columns and beams that establishes a boundary between the central core and surrounding workshop spaces.

This structure provides primary stability while retaining flexibility in space utilization and service provision.

Our specialist team manufactured and installed over 430m of custom timber LED handrail, incorporating helical, curved, and straight sections, seamlessly integrating with the sweeping concrete 'heart wall' stair and adjoining black steel staircases; wall mounted with custom black powder coated steel brackets.

Mastering an unfinished surface presents a unique design challenge, as production director Marcus Cave describes how 'fixing to a concrete surface demands complete precision, as there's no room for touch-ups. To address this, our team devised a bespoke fixing method, which involved casting a spigot into pre-drilled holes in the concrete and attaching our bracket directly — so accuracy was key! The team did a fantastic job, delivering this perfectly on a hugely impressive build. Sincere thanks to Buro Happold for the opportunity with our Glowrail product.'







Hiscox, York

Glowrail - Leather



Architect

MAKE

Lighting Design

Chapman BDSP

Products

Glowrail - Leather

Services

Specialist lighting manufacture & installation

Industry

Commercial

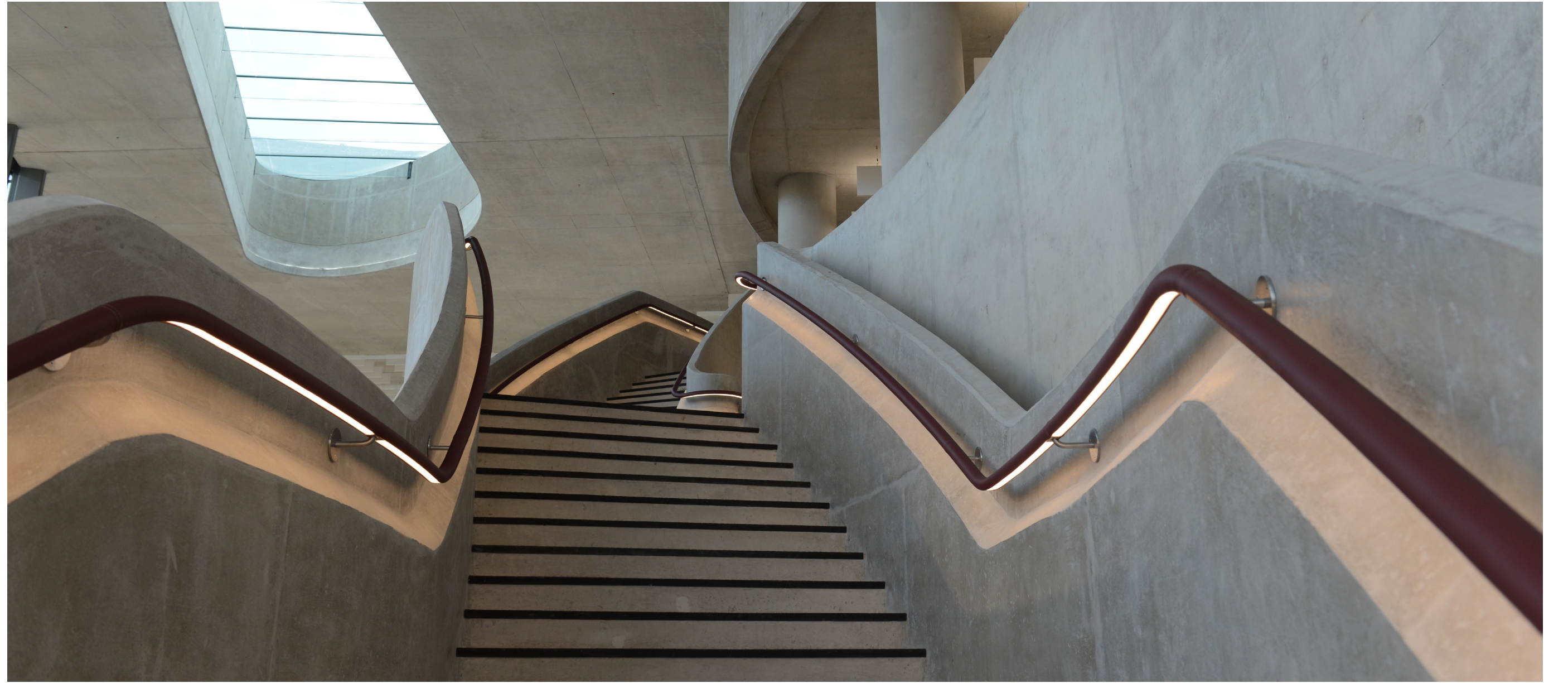
The new office build for Hiscox, York features a centerpiece comprised of three cast concrete stairways that flow elegantly through the heart of the triple-height atrium. Designed by Make Architects, these helical style stairways hover effortlessly high above the ground floor as workers are able to drift leisurely beneath.

A room awash with tonnes of natural light and contemporary architecture, The Light Lab were tasked with providing bespoke Glowrail LED handrails, clad in rich, high-quality leather.

A distinctive building externally, with bold curving corners and rounded glass windows, the handrail is a stunning addition to this already rich architectural design.

Close coordination and a shared creativity between the parties involved resulted in the creation of a show-stopping bespoke leather LED handrail for the client, who were delighted with the result.

This polished place of work is set to be a landmark building and we are thrilled to have been part of this project.





Shrewsbury Flaxmill

Bespoke Heritage Lighting



Architect
Products
Services
Industry

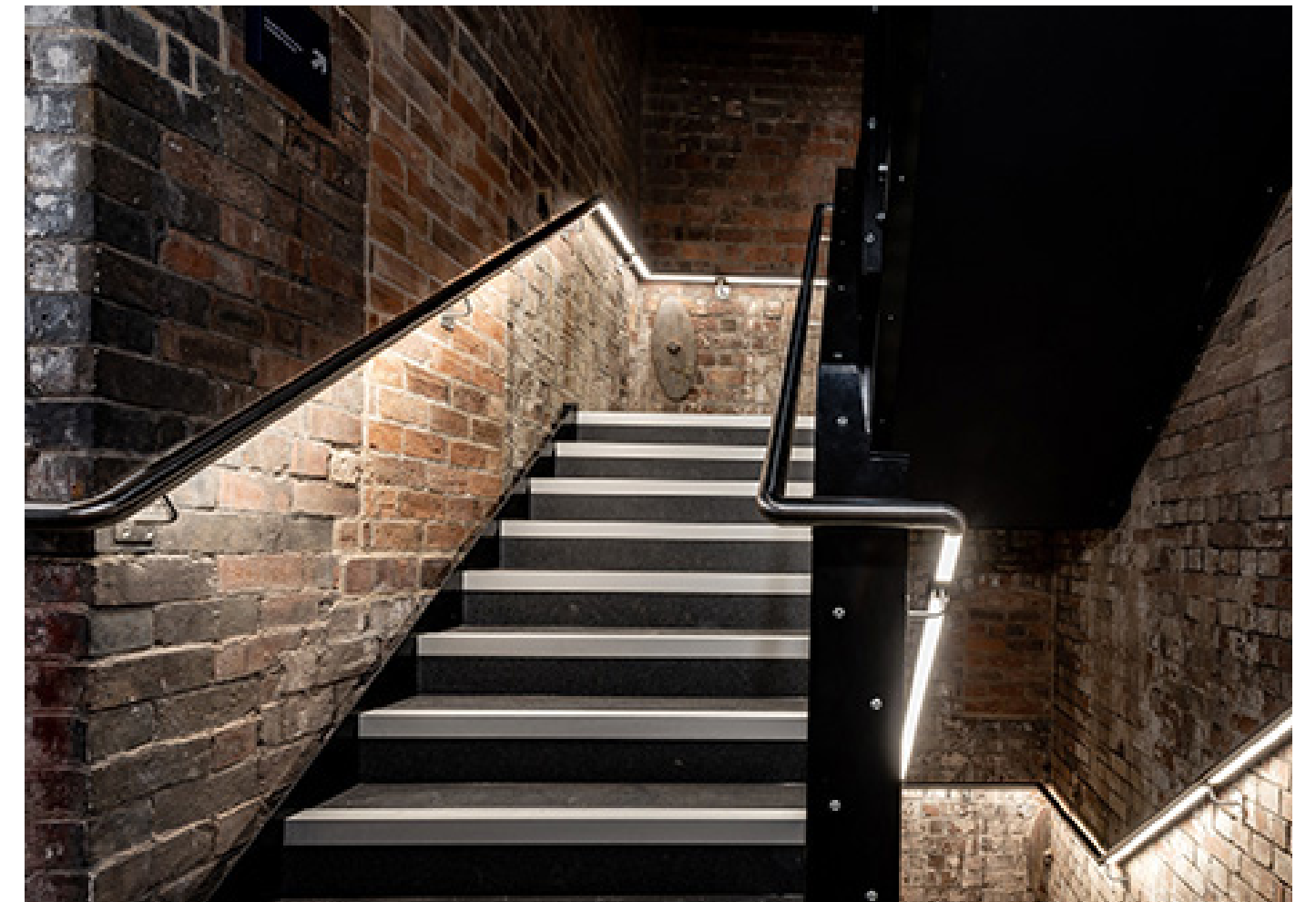
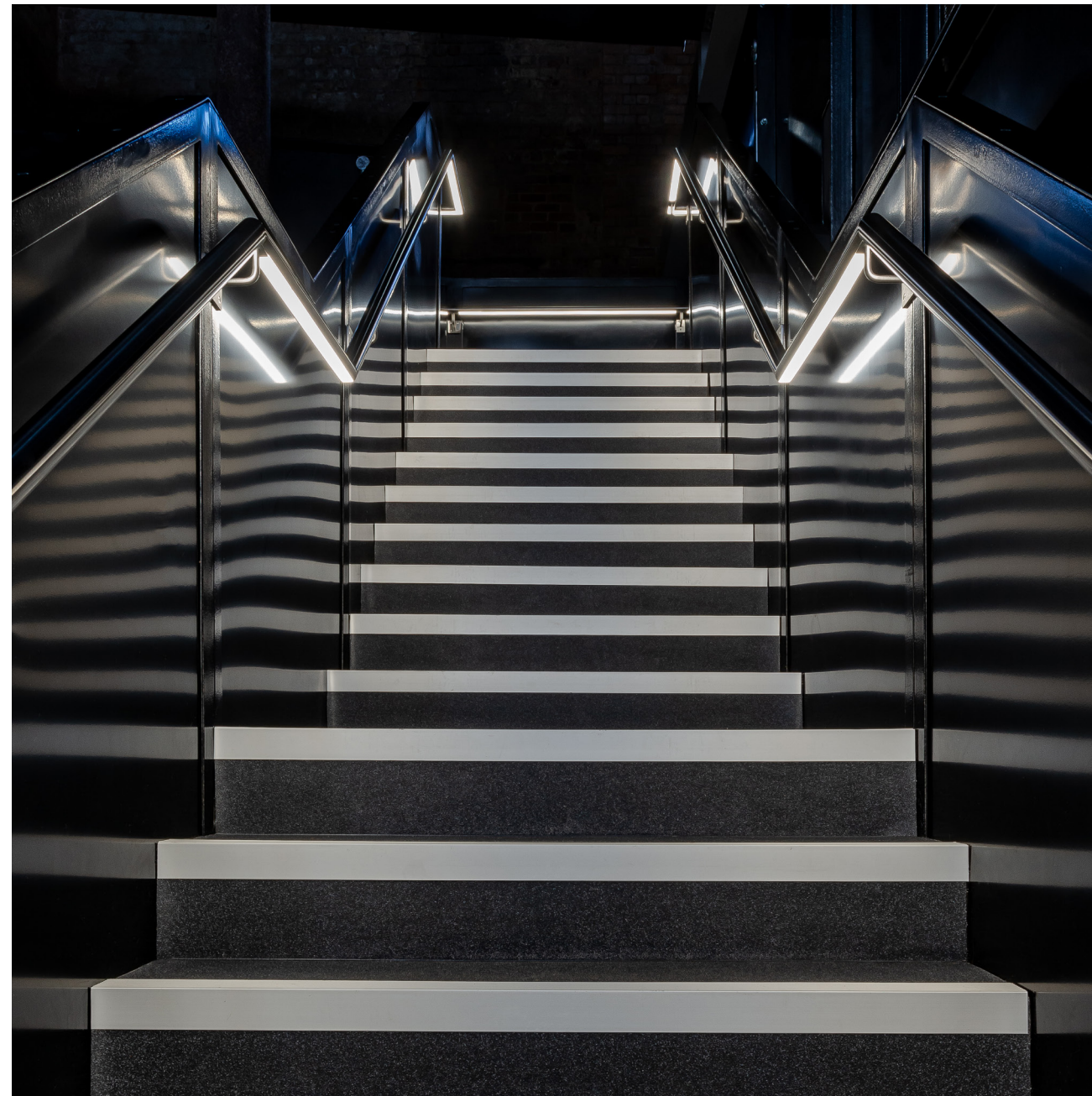
Fielden Clegg Bradley Studio
Glowrail - Brushed Stainless Steel
Specialist lighting manufacture & installation
Heritage / Hospitality & Leisure

Shrewsbury Flaxmill Maltings is one of the most important buildings of the industrial revolution, and has been part of a £28 million restoration since 2017 by Historic England and The Lottery Fund. The repair and adaptive re-use of the former flaxmill has been led by Feilden Clegg Bradley Studios & contractor Gleeds, who brought in the light lab to realise their concept design for an illuminated handrail system to light for the Grade II listed Kiln building.

Our specialist team fabricated & installed custom stainless steel lit handrail, using our Glowrail product, to light the walkways connecting the corridors and staircases within the Kiln building.

The challenges that arise with installing fittings in a heritage building, such as mounting handrail onto ancient, exposed brickwork, was handled with a light touch conservation approach, led by FCB, to 'preserve and enhances the character of the Flaxmill which required traditional craft, materials and skills'.

The site is a flagship project for Historic England in demonstrating how historic buildings can be sustainably reused and officially opened to the public in September 2024.





Freshfields

Bespoke Office Lighting



Architect

ID;SR

Lighting Design

18 Degrees

Products

Glowrail - Timber Finish

Services

Specialist lighting manufacture & installation

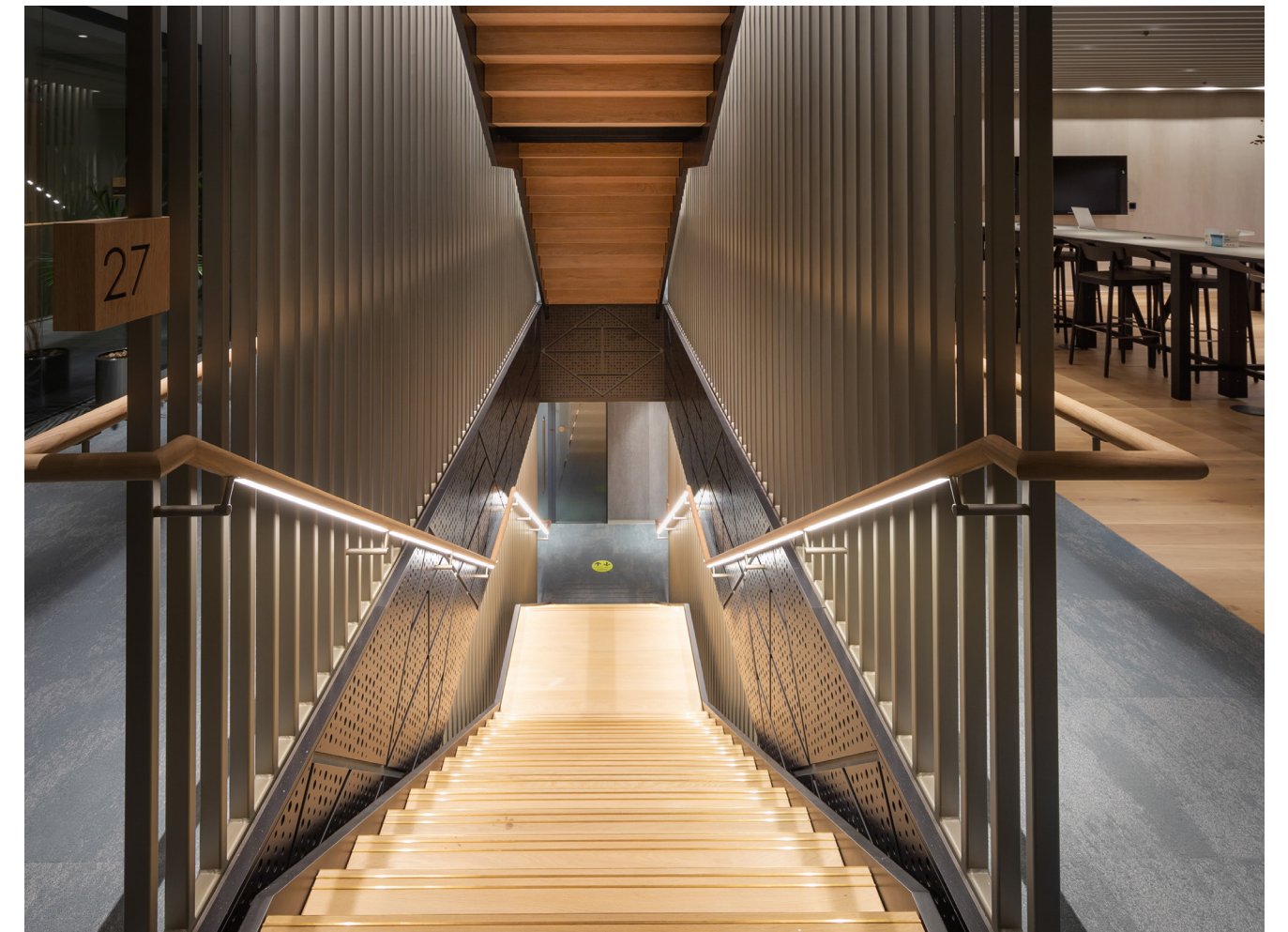
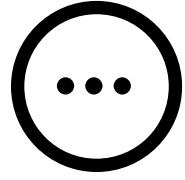
Industry

Commercial

The Light Lab worked alongside lighting designer 18 Degrees to manufacture and install a bespoke timber handrail at the new Freshfield's Bruckhaus Deringer LPP HQ at 100 Bishopsgate.

Our specialist team realised the custom lighting design of 18 Degrees, to create a bespoke timber finish handrail with our bespoke Glowrail fitting, timber finish.

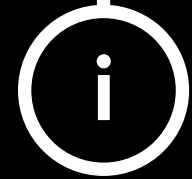
Working in close conjunction with interior architect ID:SR & Sheppard Robson, 18 Degrees were tasked with designing the lighting for the front and back of house areas in the London based law firm's office. Our Glowrail product was specified to light helical and straight sections of stairwells; providing a striking centre piece within an office designed to accommodate 'agile working' and 'preference of staff, as well as the availability of natural light taken into consideration.





Wellington Place

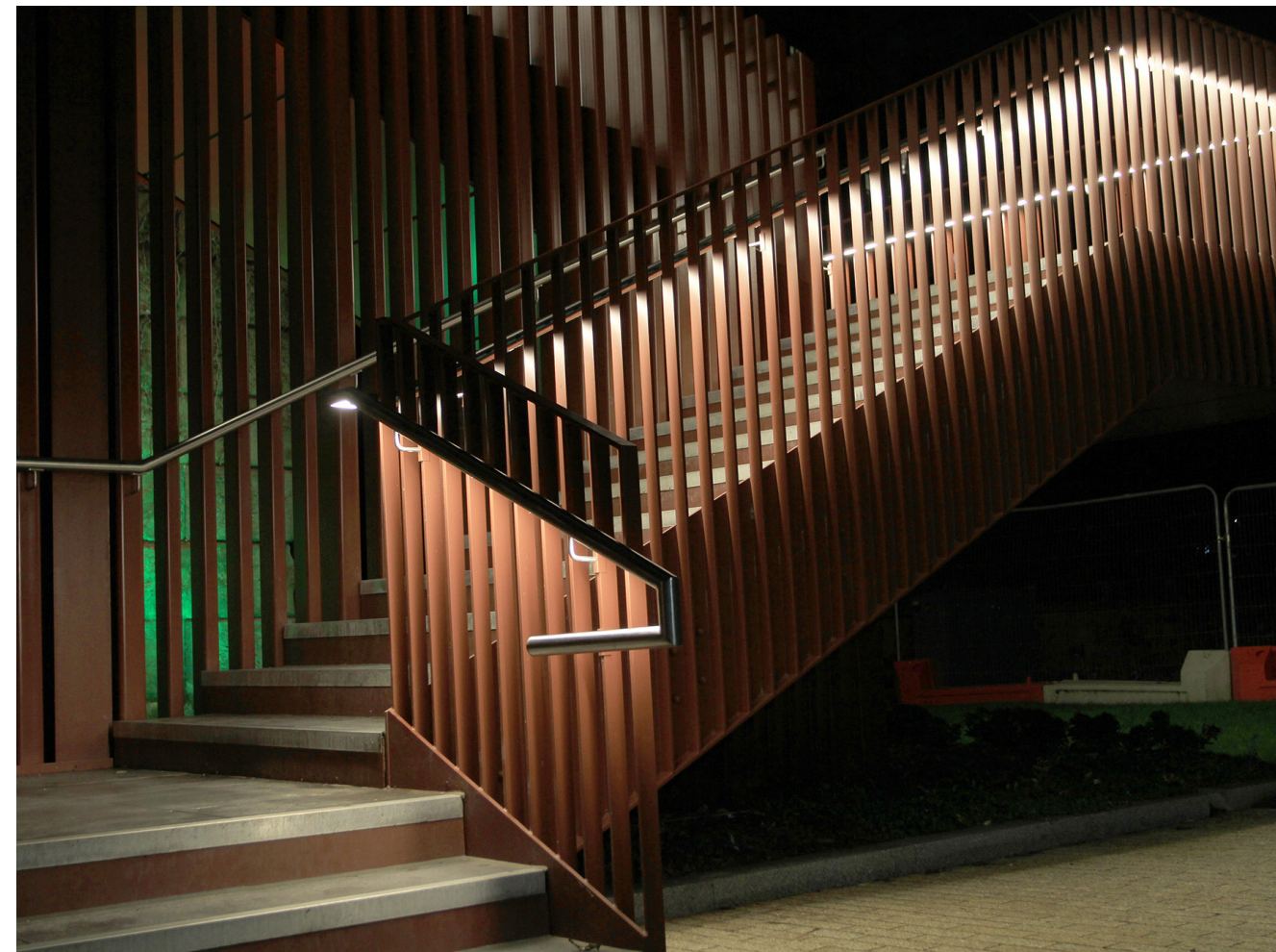
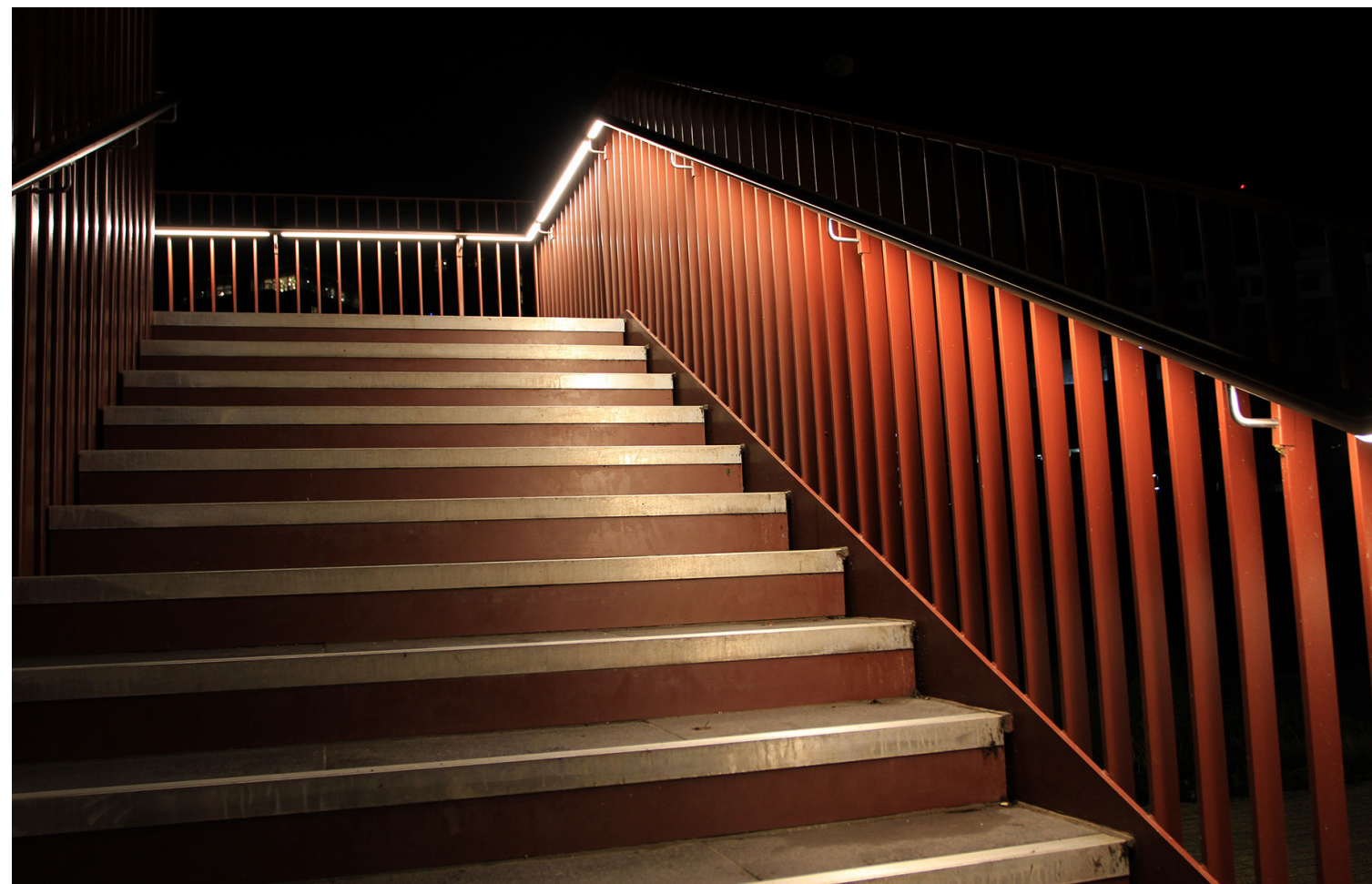
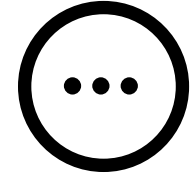
Bespoke Exterior Lighting



Architect	Sheppard Robson
Lighting Design	ARUP
Products	Glowrail - Brush Stainless Steel
Services	Specialist lighting manufacture & installation
Industry	Heritage / Public Realm

The Monk Bridge Viaduct regeneration project, at Wellington Place Leeds, has seen access returned to the historic bridge, for the first time in 40 years. Developer MEPC have created Yorkshire's first elevated urban park, with the viaduct link designed by Sheppard Robson, contractor Wates and lighting design by ARUP Leeds. [View here.](#)

The Light Lab were specified by ARUP to provide bespoke 'Glowrail' illuminated handrail fitting for the external staircase linking the bridge to street level. Our specialist team fabricated and installed our custom LED handrail fitting, in a polished stainless steel 316 finish. The grade two-listed Monk Bridge viaduct was built around 1846 as part of the new railway network being constructed in the Wellington Street area of Leeds, and is one of several heritage lighting projects that The Light Lab have been involved with this year.





Aviva Studios

Bespoke Hospitality Lighting



Architect

OMA

Lighting Design

BDP

Products

Glowrail - Brushed Stainless Steel

Services

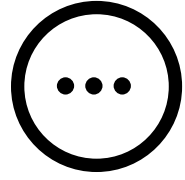
Specialist lighting manufacture & installation

Industry

Hospitality / Leisure

Aviva Studios, in Manchester, is a landmark new cultural space for Manchester, comprising of a 13,250 sqm building; developed by Manchester City Council, with backing from Arts Council England, The new home of Factory International is a unique multi use space, with an adaptable space to suit any kind of set up – ‘from intimate theatre shows and intricate exhibitions, to huge multimedia performances and warehouse-scale gigs fit for the greatest artists of our time’.

Designed by Ellen van Loom of OMA (Office for Metropolitan Architecture), the lighting design by BDP, specified The Light Lab’s custom LED handrail Glowrail, to illuminate several key areas within the building. Our specialist team fabricated and installed our custom stainless steel LED Glowrail product in the entrance hall to the Warehouse; the connecting stair to the Andrew & Zoe Law hall and also an orange powder coated rail was fitted for a more functional fire escape stair. Our Glowrail product delivers a sophisticated lighting solution to Aviva Studios, with the sleek lines of seamless light, creating a harmonious blend of form & function.





University of Edinburgh

Bespoke Exterior Glowrail

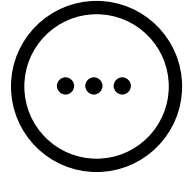


Architect
Products
Services
Industry

Lee Boyd
Glowrail - Brushed Stainless Steel
Specialist lighting manufacture & installation
Education

The Light Lab provided a sleek and practical handrail lighting solution to the exterior of the Kings Building, Ashworth Laboratories at the University of Edinburgh.

Working to the initial concept by Lee Boyd architects, The Light Lab team manufactured and installed our bespoke LED handrail fitting 'Glowrail', to custom straight and helical shapes, to follow the contours of the stairs and access ramps; creating a safe and well lit area leading up to the entrance of the Kings Building, whilst maintaining a high level of design.





Private School, London

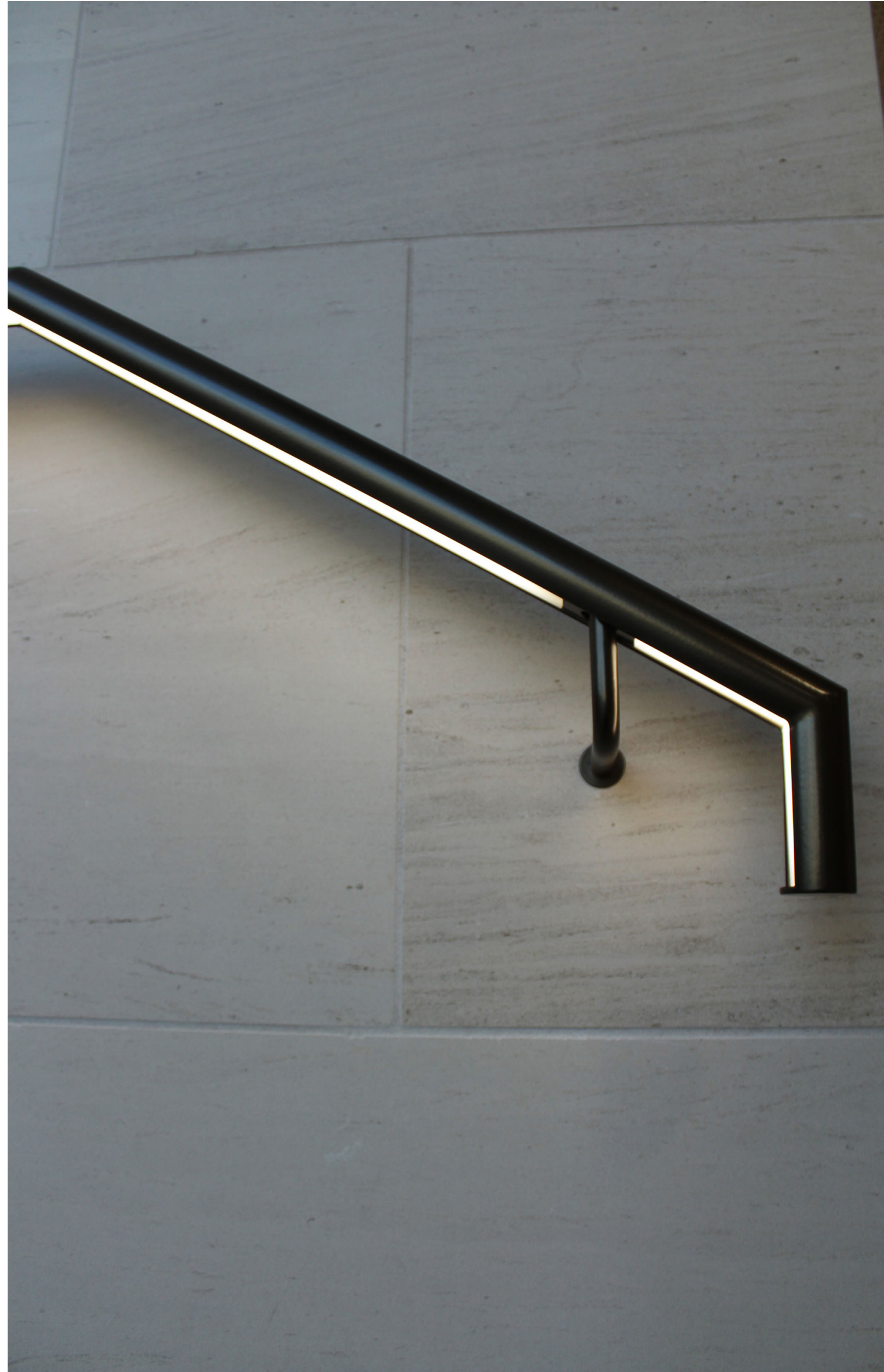
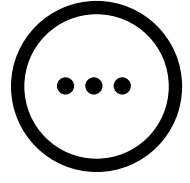
Bespoke Glowrail



Architect
Products
Services
Industry

John Mcaslan & Partners
Glowrail - Powder Coated
Specialist lighting manufacture & installation
Education

The Light Lab fabricated and installed a sleek and bespoke LED handrail with black powder-coated finish, for the stairwell at this prestigious public school in Central London.





Purdy's Wharf, Canada

Bespoke Helical Glowrail



Products
Services
Industry

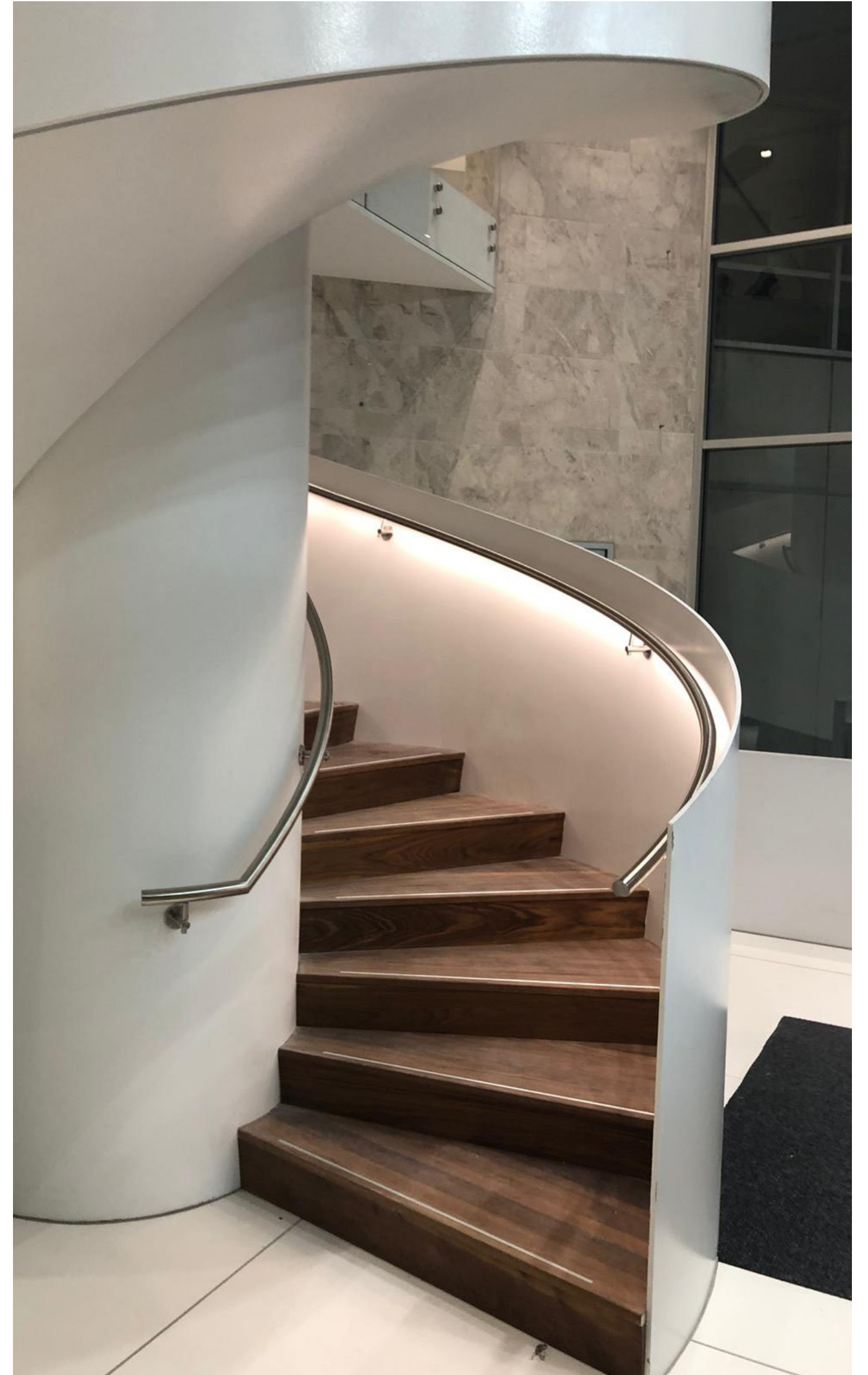
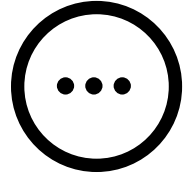
Glowrail - Brushed Stainless Steel
Specialist lighting manufacture
Retail / Commercial

Purdy's Wharf is a prominent business complex in Halifax, Canada, renowned for its prime waterfront location and its status as a key commercial hub. The complex consists of three office towers, including some of the city's most sought-after office spaces, offering stunning views of Halifax Harbour.

The Light Lab was commissioned to fabricate their signature Glowrail LED handrails for one of the office buildings, to a helical stair; adding a modern and distinctive touch to the space while enhancing its sleek, contemporary aesthetic.

They created sleek and modern brushed stainless steel handrails in complex helical section, to illuminate a stair in one of the development's office locations.

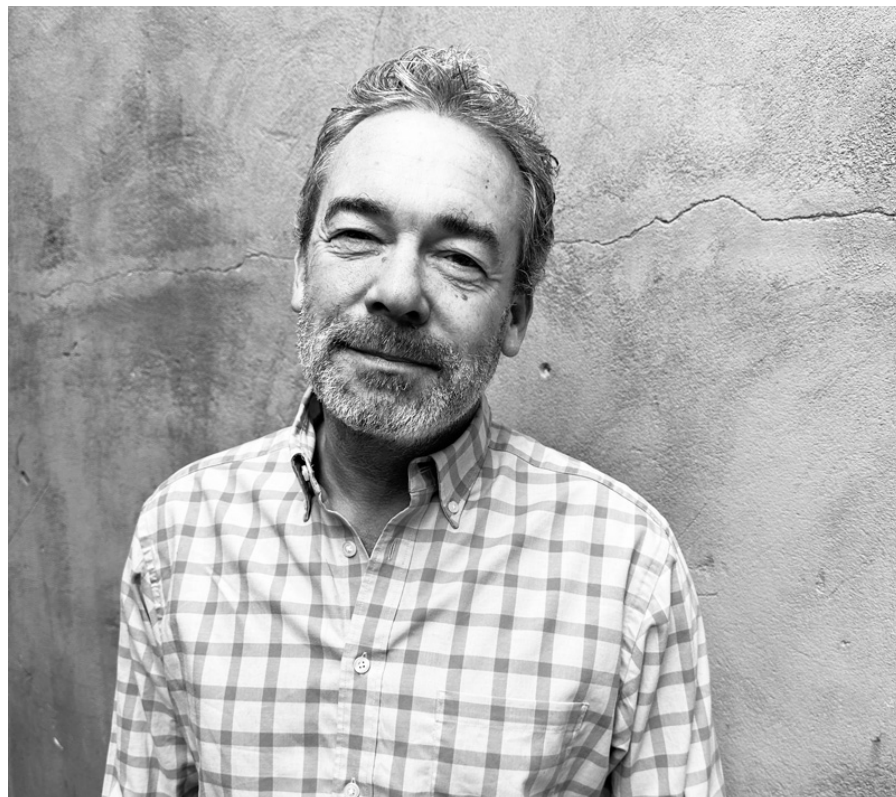
This project is a prime example of how our team can work on projects on a global scale, and assemble a specialist team to install, even outside of the UK.





Meet The Team

The three company Directors are also the lead project & production managers and they will be your point of contact throughout the duration of this project.



Phil Riley, Director

Phil started life as a qualified chartered accountant, moved quickly into project management and then spent 10 years as an independent management consultant, specialising in project management in large multinationals at a local level, managing manufacturing, logistics and installation projects for Nestle all over Europe.

Phil oversees the growing number of projects in the US - most recently spending time in New York to project manage a large scale lighting installation at Penn Station (*see case study detailed in these credentials*).



Graeme Laurie, Director

Graeme has an MSC in Light and Lighting from UCL and has worked for The Light Lab since 2003. He has been responsible for managing a diverse range of lighting installations in the UK - also overseeing the majority of international projects in the Middle East & Australia - overcoming logistical complexities and large scale engineering challenges.

Recent projects include Paspaley, Australia, Broadgate Quarter (*see case study*), Centria Mall, Saudi Arabia.



Chris Burridge, Sales Director

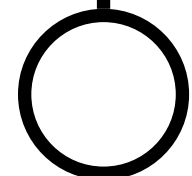
Chris joined The Light Lab as Sales Director in 2020, having previously worked with the team for 15+ years as both a client or a supplier.

Chris has been in the lighting industry for the past 22 years, since leaving Brunel University in 2000, where he studied Mechanical Engineering. Initially specialising in fibre optic lighting, Chris soon moved into other areas to expand his knowledge; always in a sales focused role but with involvement in product design and engineering challenges to satisfy his creative interests.



Marcus Cave, Production Director

Marcus has more than 30 years of lighting design and installation experience and creative product engineering. He has been responsible for many high profile global lighting projects, including the award winning Kings Cross light tunnel, Sushi Samba, Lexington Avenue, New York & University of Arts parade ground. Working closely with top lighting designers & architects including Chapman BDS, Alma Cardzic, Nulty +, Arup & BDP.





Testimonials

“In our design solutions for Friars Walk, we required the exterior stainless steel and glass balustrade and façades to contribute towards elevating the centre’s night-time economy. To achieve this, we adopted The Light Lab’s new technology to provide an exciting and energetic character to the centre’s public realm. Not only does it bring Friars Walk to life at night, extending the dwell time of shoppers, but it also allows for visual connectivity between the upper and lower external areas of the centre.

This ensures shoppers can easily navigate through the centre, capitalizing on the diversity of retail and leisure available.”

Brian Tracey, Director at Leslie Jones Architecture



“From the very early stages, the staircase played a central role in the overall design of the space. The lighting enhanced the geometry of this fantastic design by Allies and Morrison and created a seamless directionality for the visitors, staff and students.

The involvement of The Light Lab early on, ensured a good integration of the lighting into the curved handrail and a smooth installation process, despite the challenging geometry and services coordination. The final result can only leave you in awe, especially when you find yourself in the space, experiencing first-hand the playful combination of the curves with the concrete material that the warm light so beautifully highlights. It is one of the designs that our lighting team in Buro Happold is most proud of.”

Myrto Skreta-Krikou, Associate Lighting Designer, Buro Happold





Testimonials

Andrew Bissell from Cundall, speaks of the close working relationship between the designers and the light lab, to ensure the installation ran smoothly and was completely true to the design. “Having designed such a large lighting element to fill the atrium space, we needed to be sure the design intent was retained through the construction detail and installation process. The Light Lab understand the importance of even the smallest of details and how to manage and undertake an installation of this nature. As such the client has the lighting effect originally presented along with a high quality and low maintenance product and installation.” *Broadgate Quarter, London*



“The West End Concourse at Penn Station was a large, very public, project in New York. Time was absolutely critical to meet the tight deadline set by the Governor’s office. The Light Lab executed the project on time and within budget. From a design standpoint, they understood how to translate a concept into reality from the desired lighting effect to addressing durability and maintained issues. The result is a high quality, lighting installation which has been received extremely well by the New York Public.”

Peter Fajak – Skidmore, Owings & Merrill (Penn Station)

the light lab

bright ideas

22 Holywell Row
London
EC2A 4JB

+44 (0) 207 278 2678
info@thelightlab.com

Thank you