



Glowscreen

spec sheet

Key features

Tailored: Fully tailorable size providing even surface illumination with minimal depth.

LED: Wide range of light outputs, colour temperature and colours.

Control: Switched, 0-10/1-10v, DALI, DMX and SPI dimming protocols.

Material: Fabric tension system across a lightweight frame.

Aesthetic: Digital fabric printing process for maximum luminosity with easily exchangeable graphics.

Longevity: 50,000+ LED lifetime expectancy.

Sustainability: Maintainable LED modules.

Application: Interior and exterior wall and ceiling options.

Glowscreen by The Light Lab



Glowscreen

the light lab
bright ideas

Product Details Glowscreen



Specification

Output	SO	HO	RGBW	WWCW
Power Consumption	40W/m ²	80W/m ²	180W/m ²	80W/m ²
Voltage	24VDC			
IP Rating	IP40 or IP65			
LED Colour ¹	2.7K/3.0K/4.0K/5.0K, RGBW or WWCW (White Mix 2.7K - 6.5K)			
Dimensions:	Width	2000mm (max)		
	Length	50,000mm (max)		
	Depth ²	65mm (HO)		
Mount Type ³	Surface (SM), Recessed Wall (RE), Wall (WA) or Ceiling (CE)			
Finish	White (WH) or Custom RAL (RAL)			
Control	0-10V/1-10V/DMX/DALI/SPI			

Notes

- 1 Other colours available on request.
- 2 Depth excludes grommet, glands & cables.
- 3 Special mechanical consideration is required for ceiling applications.

Order code

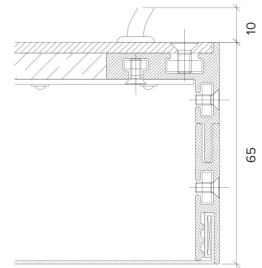
Glowscreen- Output-IP Rating-LED Colour-Mount Type-Frame Finish-
Length x Width(mm)- Dimming

Example code: Glowscreen-SO-IP40-3.0K-SM-BR-1200x300-DALI

Description: Glowscreen, standard output, IP40, 24VDC constant voltage LED with 3000K colour temperature. Surface mounted with brushed stainless steel frame. Overall dimensions = 1200x300mm mm. DALI dimmable.

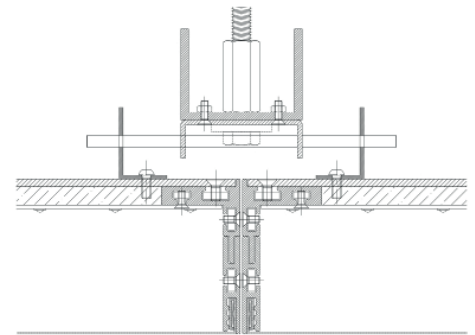


X Section

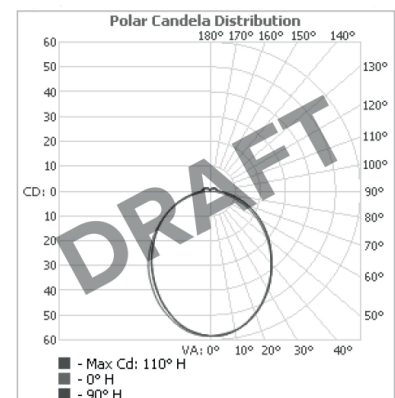


Mount Type

Ceiling (CE)



Photometric Data



Photometric data coming soon



The Light Lab
22 Holywell Row
London EC2A 4JB
+44 (0) 207 278 2678
@thelightlabltd
www.thelightlab.com

the light lab
bright ideas

