

Product Details Glowpanel LT



Specification

Output	SO	HO
Power Consumption	40W/m ²	80W/m ²
Voltage	24VDC	24VDC
IP Rating	IP44	IP44
LED Colour ¹	2.7K/3.0K/4.0K/5.0K, RGBW or WWCW (White Mix 2.7K - 6.5K)	
Dimensions:	Width	1200mm (max)
	Length	3000mm (max)
	Depth ²	65mm
Mount Type ³	Ceiling (CE)	
Finish	Black (BK) or Custom RAL (RAL)	
Control	0-10V/1-10V/DMX/DALI/SPI	

Notes

- 1 Other colours available on request.
- 2 Depth excludes grommet, glands & cables.
- 3 Special mechanical consideration is required for ceiling applications.

Order code

Glowpanel LT- Output-IP Rating-LED Colour-Mount Type-Frame Finish- Length x Width(mm)- Dimming

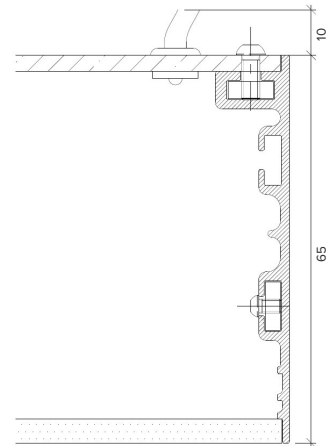
Example code: Glowpanel LT-SO-IP44-3.0K-CE-BR-1200x300-DALI

Description: Glowpanel LT, standard output, IP44, 24VDC constant voltage LED with 3000K colour temperature. Ceiling mounted with powder coated frame. Overall dimensions = 1200x300mm mm. DALI dimmable.



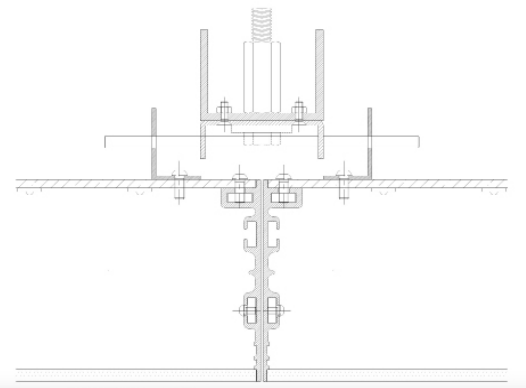
X Section

IP44

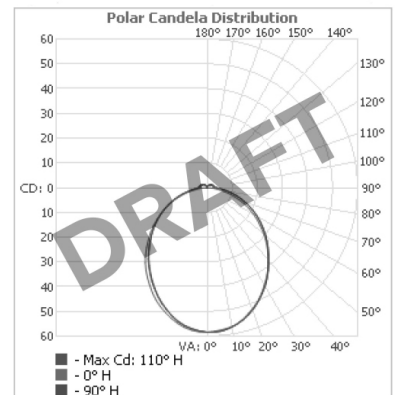


Mount Type

Ceiling (CE)



Photometric Data



Photometric data coming soon



The Light Lab
 22 Holywell Row
 London EC2A 4JB
 +44 (0) 207 278 2678
 @thelightlabtd
 www.thelightlab.com

the light lab
 bright ideas