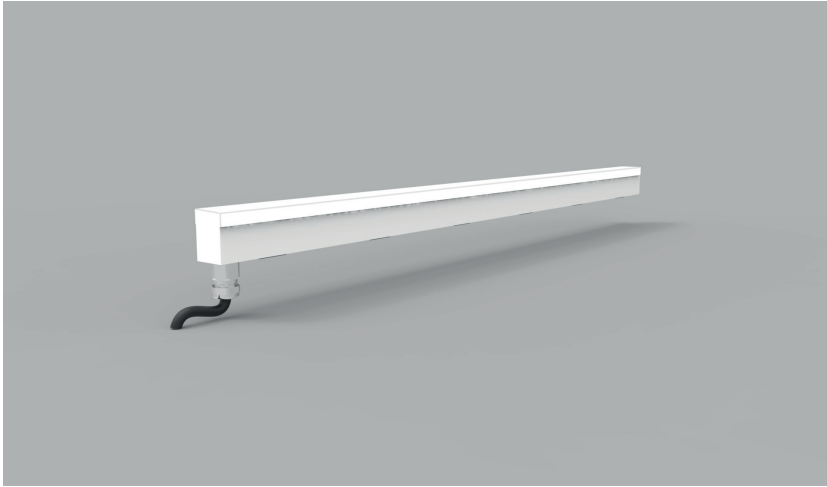


Product Details GL20 - US Spec



Specification

| | | | |
|-------------------------|--|--------------|--------------|
| Output | SO | HO | SHO |
| Power Consumption | 9.6W/m | 14.4W/m | 18W/m |
| Voltage | 24VDC | 24VDC | 24VDC |
| IP Rating | IP40 or IP65 | IP40 or IP65 | IP40 or IP65 |
| LED Colour ¹ | 2.7K/3.0K/4.0K/5.0K, RGBW or WWCW (White Mix 2.7K - 6.5K) | | |
| Dimensions: | | 20mm | |
| Width | | | |
| Length | 115mm to 2965mm in 50mm increments | | |
| Depth ² | | 27mm | |
| Mount Type ³ | Keyhole (KH), Magnet (MG) | | |
| Finish | Flush (F) or Proud (P) | | |
| Control | 0-10V/1-10V/DMX/DALI/SPI | | |

Notes

- 1 Other colours available on request.
- 2 Depth excludes grommet, glands & cables.
- 3 Other mount types available on request.
- 4 For curved and shaped configurations, please contact the office to discuss your requirements.

Order code

GL20-Output-IP Rating-LED Colour - Mount Type-Finish-Length-Dimming

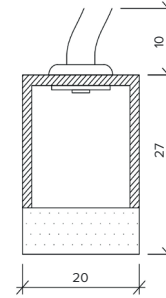
Example code: **GL20-SO-IP40-3.0K-SM-F-2065-DALI**

Description: Glowline 20, standard output, IP40, 24VDC constant voltage LED with 3000K colour temperature. Surface mounted with flush diffuser. Length=2065mm DALI dimmable.

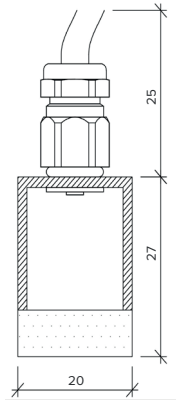


Chasis

IP44



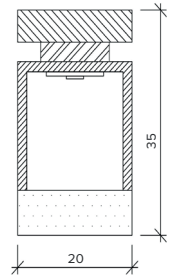
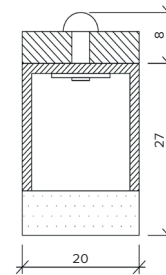
IP65



Mount Type

Keyhole (KH)

Magnet (MG)



The Light Lab
22 Holywell Row
London EC2A 4JB
+44 (0) 207 278 2678
@thelightlabltd
www.thelightlab.com

the light lab
bright ideas