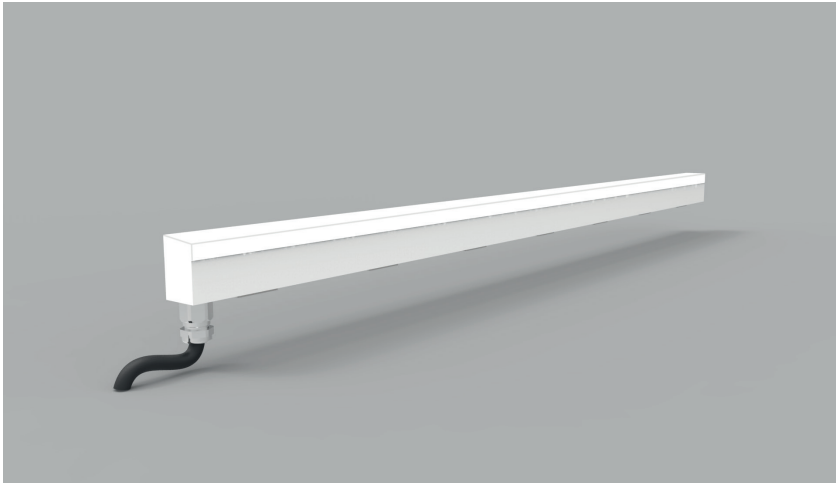


Product Details GL12 - US Spec



Specification

Output	SO
Power Consumption	9.6W/m
Voltage	24VDC
IP Rating	IP40 or IP65
LED Colour ¹	2.7K/3.0K/4.0K/5.0K, RGBW or WWCW (White Mix 2.7K - 6.5K)
Dimensions:	
Width	12.7mm
Length	115mm to 2965mm in 50mm increments
Depth ²	19.7mm
Mount Type ³	Keyhole (KH), Magnet (MG)
Finish	Flush (F) or Proud (P)
Control	0-10V/1-10V/DMX/DALI/SPI

Notes

- 1 Other colours available on request.
- 2 Depth excludes grommet, glands & cables.
- 3 Other mount types available on request.
- 4 For curved and shaped configurations, please contact the office to discuss your requirements.

Order code

GL12-Output-IP Rating-LED Colour-Mount Type-Finish-Length-Dimming

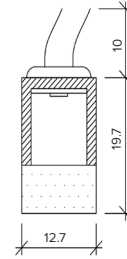
Example code: **GL12-SO-IP40-3.0K-SM-F-2065-DALI**

Description: Glowline 12, standard output, IP40, 24VDC constant voltage LED with 3000K colour temperature. Surface mounted with flush diffuser. Length=2065mm DALI dimmable.

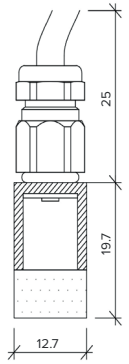


Chasis

IP44



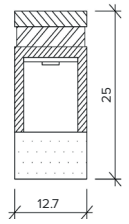
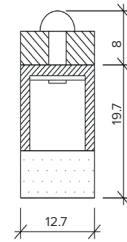
IP65



Mount Type

Keyhole (KH)

Magnet (MG)



The Light Lab
 22 Holywell Row
 London EC2A 4JB
 +44 (0) 207 278 2678
 @thelightlabtd
 www.thelightlab.com

the light lab
 bright ideas