

Product Details Glowpanel Trimless



Specification

| Output | SO | HO |
|-------------------------|--|---------------------|
| Power Consumption | average 56W/m ² | 210W/m ² |
| Voltage | 24VDC | 24VDC |
| IP Rating | IP40 or IP65 | IP40 or IP65 |
| LED Colour ¹ | 2.0K/3.0K/4.0K/5.0K, RGBW or WWCW (White Mix 2.7K - 6.5K) | |
| Dimensions: | Width 1500mm (max) Length 3000mm (max) Depth ² 35mm (SO) or 50mm (HO) | |
| Mount Type ³ | Surface (SM), Recessed Wall (RE), Wall (WA) or Ceiling (CE) | |
| Finish | White (WH) or Custom RAL (RAL) | |
| Control | 0-10V/1-10V/DMX/DALI/SPI | |

Notes

- 1 Other colours available on request.
- 2 Depth excludes grommet, glands & cables.
- 3 Special mechanical consideration is required for ceiling applications.

Order code

Glowpanel Trimless- Output-IP Rating-LED Colour-Mount Type-Frame Finish-
Length x Width(mm)- Dimming

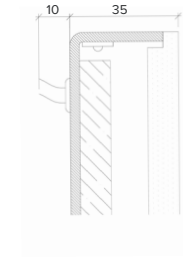
Example code: Glowpanel Trimless-SO-IP40-3.0K-SM-BR-1200x300-DALI

Description: Glowpanel Trimless, standard output, IP40, 24VDC constant voltage
LED with 3000K colour temperature. Surface mounted with powder coated chassis.
Overall dimensions = 1200x3000mm. DALI dimmable.

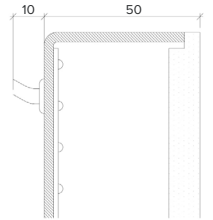


X Section

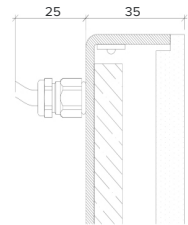
SO - IP40



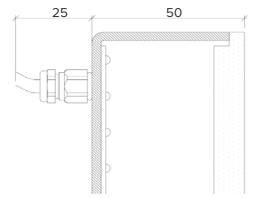
HO - IP40



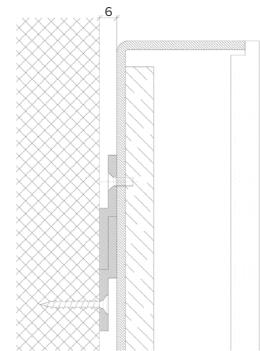
SO-IP65



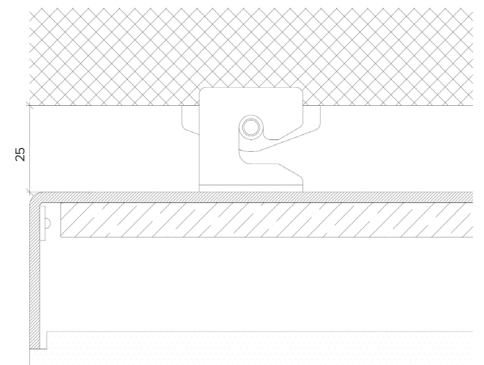
HO-IP65



Wall Fixing



Ceiling Fixing



The Light Lab
22 Holywell Row
London EC2A 4JB
+44 (0) 207 278 2678
@thelightlabltd
www.thelightlab.com

the light lab
bright ideas