



# Glowline - USA

US SPECIFICATION SHEET

## Key features

**Tailored:** Fully tailorable in curved/straight and angular sections with even light diffusion throughout.

**LED:** Wide range of light outputs, colour temperatures and colours.

**Control:** Switched, 0-10/1-10v, DALI, DMX and SPI (pixel) dimming protocols.

**Material:** Acrylic diffuser with anodised and powder coated chasis.

**Aesthetic:** Flush mounted or proud diffuser with seamless joints and no visible mechanical fixing.

**Longevity:** 50,000+ LED lifetime expectancy.

**Sustainability:** Maintainable LED modules.

**Application:** Interior and exterior in wall, ceiling and suspended applications.

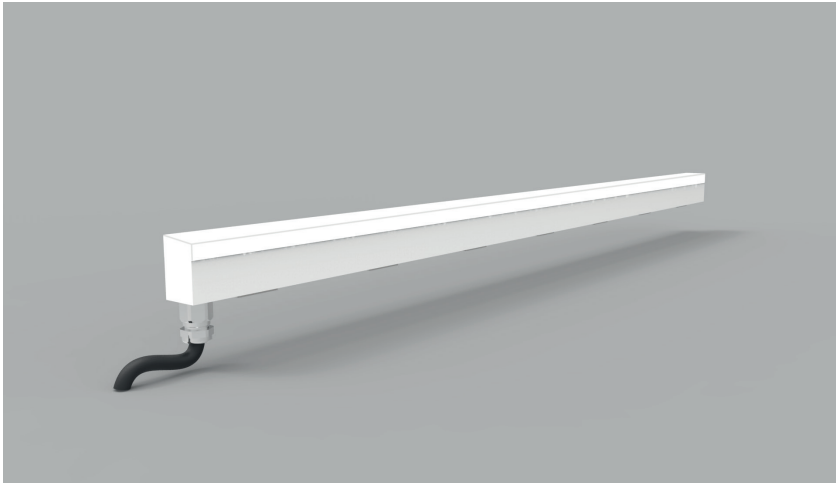
Glowline by The Light Lab



GL12  
GL16  
GL20  
GL25  
GL50

the light lab  
bright ideas

# Product Details GL12 - US Spec



## Specification

Output	SO
Power Consumption	9.6W/m
Voltage	24VDC
IP Rating	IP40 or IP65
LED Colour <sup>1</sup>	2.7K/3.0K/4.0K/5.0K, RGBW or WWCW (White Mix 2.7K - 6.5K)
Dimensions:	
Width	12.7mm
Length	115mm to 2965mm in 50mm increments
Depth <sup>2</sup>	19.7mm
Mount Type <sup>3</sup>	Keyhole (KH), Magnet (MG)
Finish	Flush (F) or Proud (P)
Control	0-10V/1-10V/DMX/DALI/SPI

### Notes

- 1 Other colours available on request.
- 2 Depth excludes grommet, glands & cables.
- 3 Other mount types available on request.
- 4 For curved and shaped configurations, please contact the office to discuss your requirements.

### Order code

GL12-Output-IP Rating-LED Colour-Mount Type-Finish-Length-Dimming

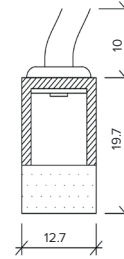
Example code: **GL12-SO-IP40-3.0K-SM-F-2065-DALI**

Description: Glowline 12, standard output, IP40, 24VDC constant voltage LED with 3000K colour temperature. Surface mounted with flush diffuser. Length=2065mm DALI dimmable.

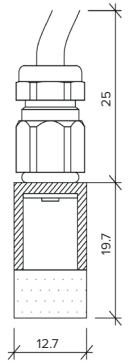


### Chasis

IP44



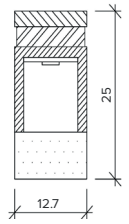
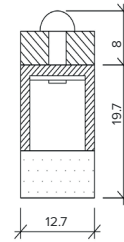
IP65



### Mount Type

Keyhole (KH)

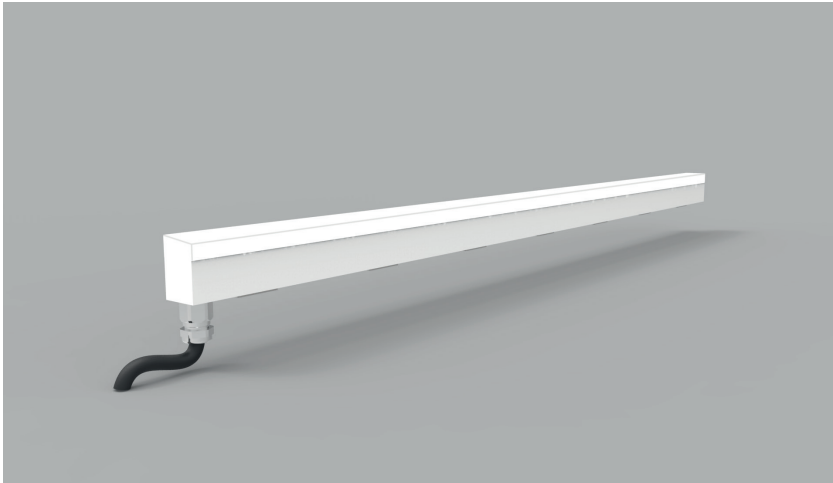
Magnet (MG)



The Light Lab  
 22 Holywell Row  
 London EC2A 4JB  
 +44 (0) 207 278 2678  
 @thelightlabtd  
 www.thelightlab.com

**the light lab**  
 bright ideas

# Product Details GL16 - US Spec



## Specification

Output	SO	HO	SHO
Power Consumption	9.6W/m	14.4W/m	18W/m
Voltage	24VDC	24VDC	24VDC
IP Rating	IP40 or IP65	IP40 or IP65	IP40 or IP65
LED Colour <sup>1</sup>	2.7K/3.0K/4.0K/5.0K, RGBW or WWCW (White Mix 2.7K - 6.5K)		
Dimensions:	Width	16mm	
	Length	115mm to 2965mm in 50mm increments	
	Depth <sup>2</sup>	22.9mm	
Mount Type <sup>3</sup>	Keyhole (KH), Magnet (MG)		
Finish	Flush (F) or Proud (P)		
Control	0-10V/1-10V/DMX/DALI/SPI		

### Notes

- 1 Other colours available on request.
- 2 Depth excludes grommet, glands & cables
- 3 Other mount types available on request.
- 4 For curved and shaped configurations, please contact the office to discuss your requirements.

### Order code

GL16-Output-IP Rating-LED Colour - Mount Type-Finish-Length-Dimming

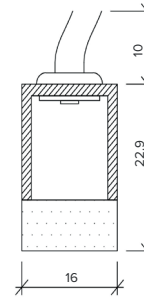
Example code: **GL16-SO-IP40-3.0K-SM-F-2065-DALI**

Description: Glowline 16, standard output, IP40, 24VDC constant voltage LED with 3000K colour temperature. Surface mounted with flush diffuser. Length=2065mm DALI dimmable.

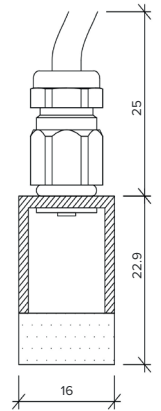


### Chasis

IP44



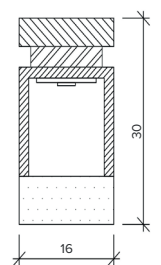
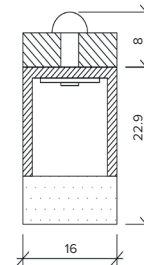
IP65



### Mount Type

Keyhole (KH)

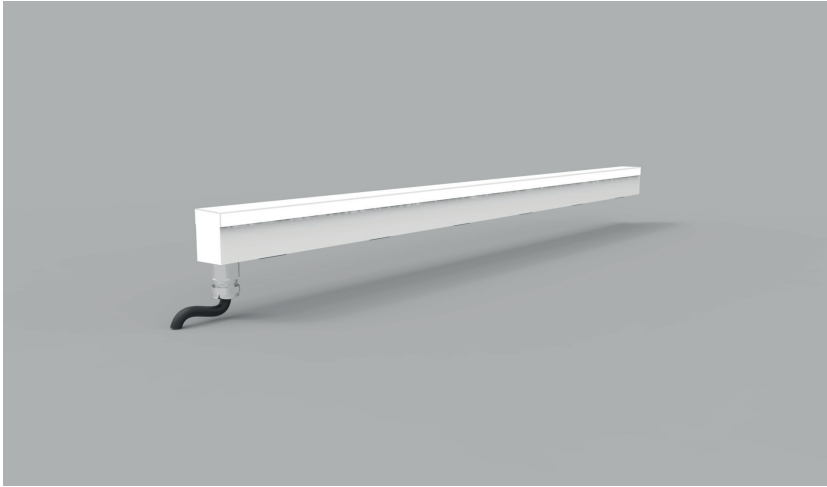
Magnet (MG)



The Light Lab  
22 Holywell Row  
London EC2A 4JB  
+44 (0) 207 278 2678  
@thelightlabltd  
www.thelightlab.com

**the light lab**  
bright ideas

# Product Details GL20 - US Spec



## Specification

Output	SO	HO	SHO
Power Consumption	9.6W/m	14.4W/m	18W/m
Voltage	24VDC	24VDC	24VDC
IP Rating	IP40 or IP65	IP40 or IP65	IP40 or IP65
LED Colour <sup>1</sup>	2.7K/3.0K/4.0K/5.0K, RGBW or WWCW (White Mix 2.7K - 6.5K)		
Dimensions:	Width	20mm	
	Length	115mm to 2965mm in 50mm increments	
	Depth <sup>2</sup>	27mm	
Mount Type <sup>3</sup>	Keyhole (KH), Magnet (MG)		
Finish	Flush (F) or Proud (P)		
Control	0-10V/1-10V/DMX/DALI/SPI		

### Notes

- 1 Other colours available on request.
- 2 Depth excludes grommet, glands & cables.
- 3 Other mount types available on request.
- 4 For curved and shaped configurations, please contact the office to discuss your requirements.

### Order code

GL20-Output-IP Rating-LED Colour - Mount Type-Finish-Length-Dimming

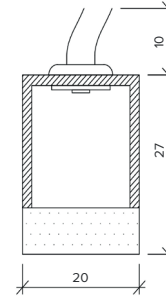
Example code: **GL20-SO-IP40-3.0K-SM-F-2065-DALI**

Description: Glowline 20, standard output, IP40, 24VDC constant voltage LED with 3000K colour temperature. Surface mounted with flush diffuser. Length=2065mm DALI dimmable.

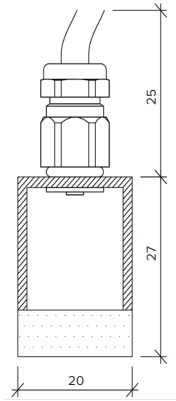


### Chasis

IP44



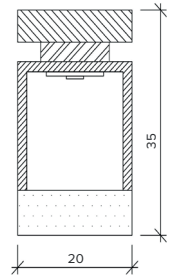
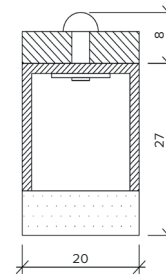
IP65



### Mount Type

Keyhole (KH)

Magnet (MG)



The Light Lab  
22 Holywell Row  
London EC2A 4JB  
+44 (0) 207 278 2678  
@thelightlabltd  
www.thelightlab.com

**the light lab**  
bright ideas

# Product Details GL25 - US Spec



## Specification

Output	SO	HO	SHO
Power Consumption	9.6W/m	14.4W/m	18W/m
Voltage	24VDC	24VDC	24VDC
IP Rating	IP40 or IP65	IP40 or IP65	IP40 or IP65
LED Colour <sup>1</sup>	2.7K/3.0K/4.0K/5.0K, RGBW or WWCW (White Mix 2.7K - 6.5K)		
Dimensions: Width	25mm		
Length	115mm to 2965mm in 50mm increments		
Depth <sup>2</sup>	32mm		
Mount Type <sup>3</sup>	Keyhole (KH), Magnet (MG)		
Finish	Flush (F) or Proud (P)		
Control	0-10V/1-10V/DMX/DALI/SPI		

### Notes

- 1 Other colours available on request.
- 2 Depth excludes grommet, glands & cables.
- 3 Other mount types available on request.
- 4 For curved and shaped configurations, please contact the office to discuss your requirements.

### Order code

GL25-Output-IP Rating-LED Colour-Mount Type-Finish-Length-Dimming

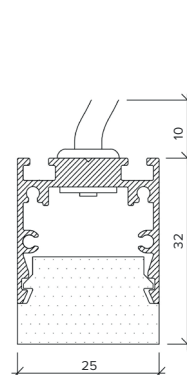
**Example code: GL25-SO-IP40-3.0K-SM-F-2065-DALI**

Description: Glowline 25, standard output, IP40, 24VDC constant voltage LED with 3000K colour temperature. Surface mounted with flush diffuser.  
Length=2065mm DALI dimmable.

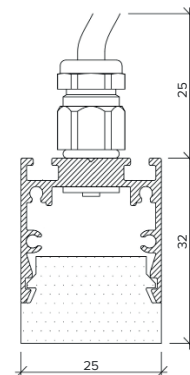


### Chasis

IP44

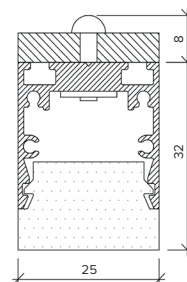


IP65

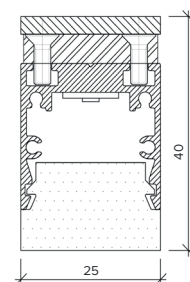


### Mount Type

Keyhole (KH)



Magnet (MG)



The Light Lab  
22 Holywell Row  
London EC2A 4JB  
+44 (0) 207 278 2678  
@thelightlabltd  
www.thelightlab.com

**the light lab**  
bright ideas

# Product Details GL50 - US Spec



## Specification

Output	SO	HO	SHO
Power Consumption	9.6W/m	14.4W/m	18W/m
Voltage	24VDC	24VDC	24VDC
IP Rating	IP40 or IP65	IP40 or IP65	IP40 or IP65
LED Colour <sup>1</sup>	2.7K/3.0K/4.0K/5.0K, RGBW or WWCW (White Mix 2.7K - 6.5K)		
Dimensions: Width	50mm		
Length	115mm to 2965mm in 50mm increments		
Depth <sup>2</sup>	55.7mm		
Mount Type <sup>3</sup>	Keyhole (KH), Magnet (MG)		
Finish	Flush (F) or Proud (P)		
Control	0-10V/1-10V/DMX/DALI/SPI		

### Notes

- 1 Other colours available on request.
- 2 Depth excludes grommet, glands & cables.
- 3 Other mount types available on request.
- 4 For curved and shaped configurations, please contact the office to discuss your requirements.

### Order code

GL50-Output-IP Rating-LED Colour-Mount Type-Finish-Length-Dimming

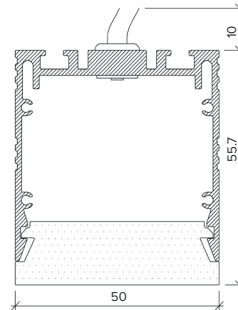
Example code: GL50-SO-IP40-3.0K-SM-F-2065-DALI

Description: Glowline 50, standard output, IP40, 24VDC constant voltage LED with 3000K colour temperature. Surface mounted with flush diffuser. Length=2065mm DALI dimmable.

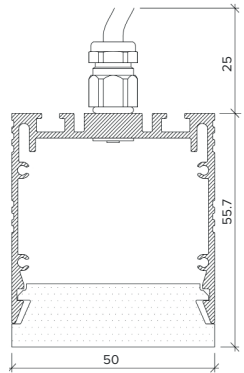


### Chasis

IP44

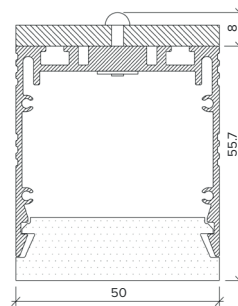


IP65

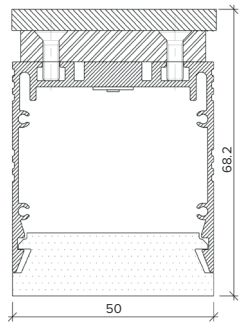


### Mount Type

Keyhole (KH)



Magnet (MG)



The Light Lab  
22 Holywell Row  
London EC2A 4JB  
+44 (0) 207 278 2678  
@thelightlabltd  
www.thelightlab.com

**the light lab**  
bright ideas

Project Images



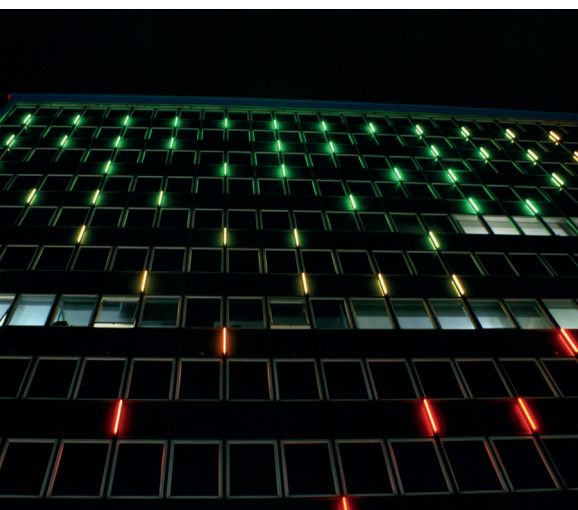
Donau Plex, Vienna



F1 Arcade, London



Bobby Moore Underpass, Wembley



Ashford International



Commercial Office, London



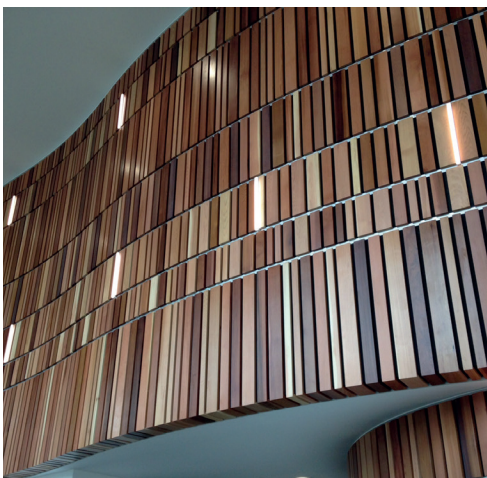
Broadgate Circle



Castglione, London



Westferry Circus



Admiral, Newport